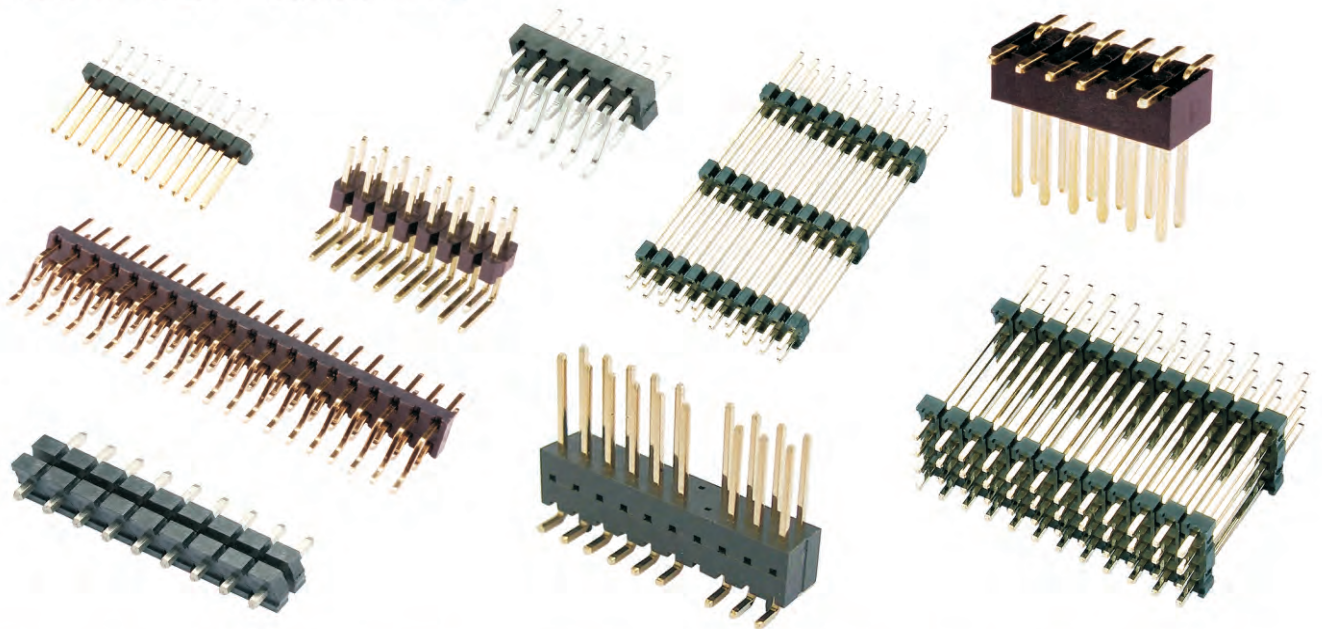


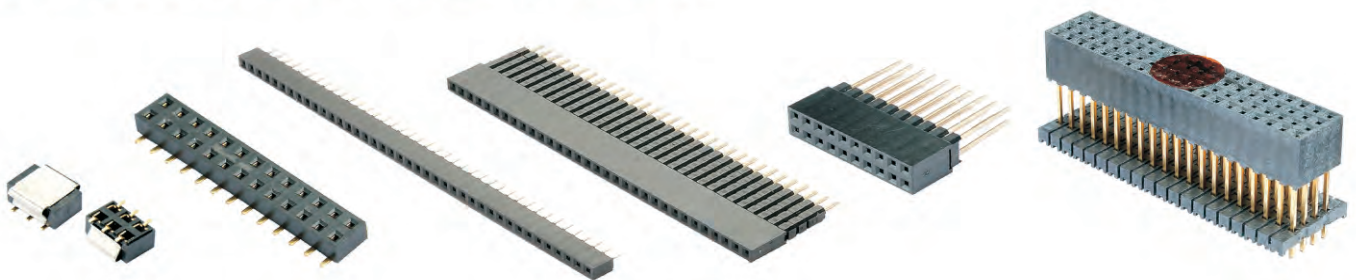
PIN HEADER / FEMALE HEADER



Pin header



Female header

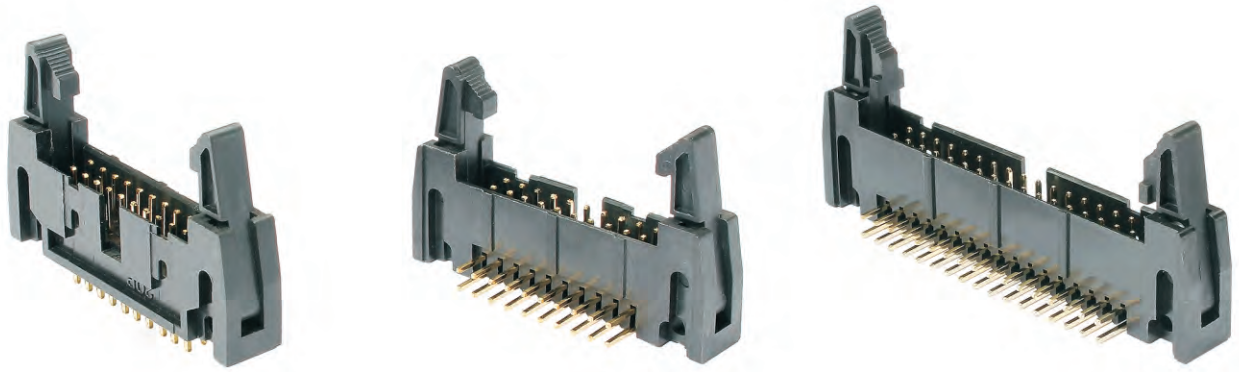


ALL LINK CORP. / ALL LINK ELECTRONICS CORP.

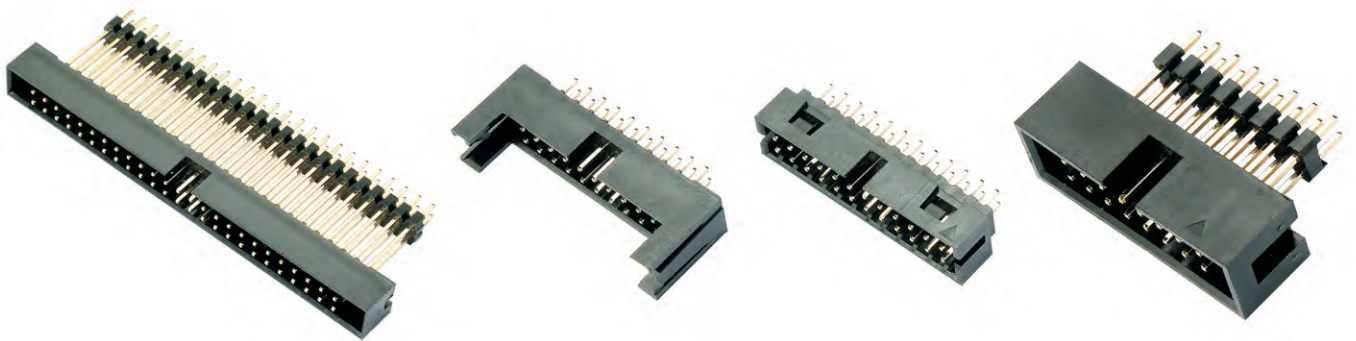
4F-11, NO.39, SEC.3, ZHONGSHAN RD., ZHONGHE DIST., NEW TAIPEI CITY 235, TAIWAN
TEL#:886-2-82286830 FAX#:886-2-82286832 <http://www.alllink.com.tw>

BOX HEADER / BOX HEADER EJECTOR

Ejector box header



Box header



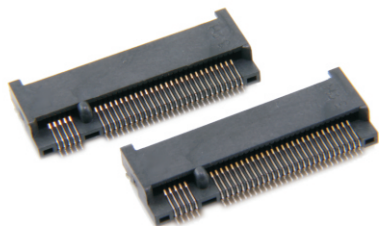
ALL LINK CORP. / ALL LINK ELECTRONICS CORP.

4F-11, NO.39, SEC.3, ZHONGSHAN RD., ZHONGHE DIST., NEW TAIPEI CITY 235, TAIWAN
TEL#:886-2-82286830 FAX#:886-2-82286832 <http://www.allink.com.tw>

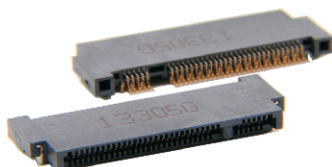
M.2/DDR4/DDR3/MINI PCI EXPRESS CONN.



series no.: NFS
M.2 CARD CONNECTOR



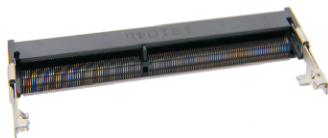
series no.: NASx0-A
M.2 CARD CONNECTOR
REVERSE SINKING TYPE



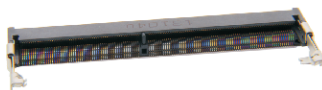
series no.: D4L1A
DDR4 288PIN CONNECTOR
DIP TYPE



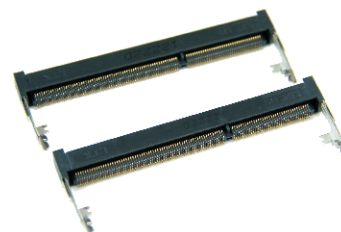
series no.: D4AS0
DDR4 SO DIMM CONN.
STANDARD H: 4.0 ~9.2



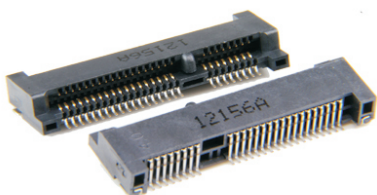
series no.: D4AR0
DDR4 SO DIMM CONN.
REVERSE H: 4.0 ~9.2



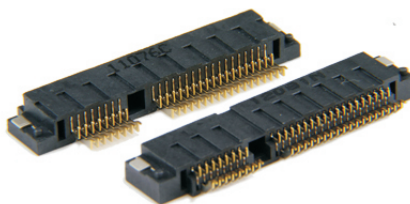
series no.: DDRSK
DDR3 SO DIMM CONN.
STANDARD H: 4.0 ~11.0mm



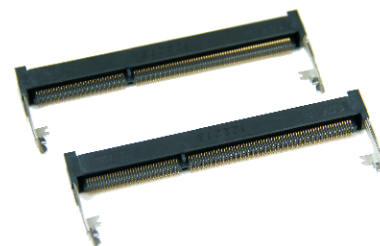
series no.: MPCET
MINI PCI EXPRESS CONN.
STANDARD/REVERSE H:4.0~9.0



series no.: MPCET
MINI PCI EXPRESS CONN.
SINKING H:1.7~3.0mm



series no.: DDRRK
DDR3 SO DIMM CONN.
REVERSE H: 4.0 ~11.0mm



ALL LINK CORP. /ALL LINK ELECTRONICS CORP.

4F-11, NO.39, SEC.3,ZHONGSHAN RD., ZHONGHE DIST. NEW TAIPEI CITY 235, TAIWAN
TEL#:886-2-82286830 FAX#:886-2-82286832 <http://www.alllink.com.tw>

RF CONNECTOR / MICRO COAXIAL CONN.



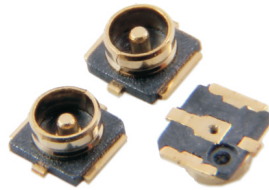
series no.: **278F**

MICRO COAXIAL CONNECTOR
2.0*2.0 SWITCH TYPE 0.9H



series no.: **278C**

MICRO COAXIAL CONNECTOR
2.0*2.0 0.6H



series no.: **RFCSR**

MICRO COAXIAL CONNECTOR
3.0*3.1



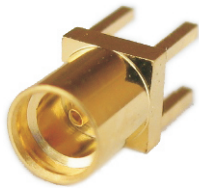
series no.: **RFSVR**

MICRO COAXIAL CONNECTOR
3.0*3.0 SWITCH TYPE



series no.: **279A**

MMCX STRAIGHT JACK



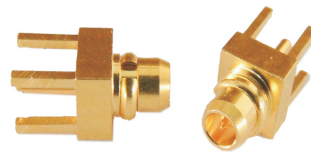
series no.: **279C**

MMCX RIGHT ANGLE JACK



series no.: **279D**

MMCX MALE STRAIGHT



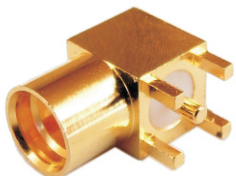
series no.: **280A**

MCX STRAIGHT JACK



series no.: **280C**

MCX RIGHT ANGLE SMT



series no.: **262C**

SMA STRAIGHT
RECEPTACLE



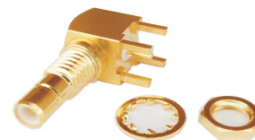
series no.: **262D**

SMA STRAIGHT
RECEPTACLE SMT



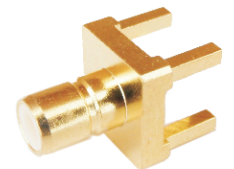
series no.: **263A**

SMB R/A JACK MALE PIN



series no.: **263B**

SMB STRAIGHT JACK



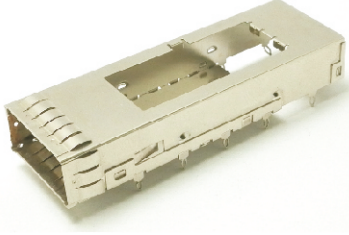
ALL LINK CORP. / ALL LINK ELECTRONICS CORP.

4F-11, NO.39, SEC.3,ZHONGSHAN RD., ZHONGHE DIST., NEW TAIPEI CITY 235, TAIWAN
TEL#:886-2-82286830 FAX#:886-2-82286832 <http://www.alllink.com.tw>

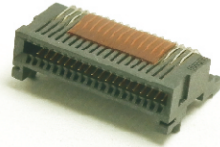
QSFP / SFP+ / SFP CONNECTOR



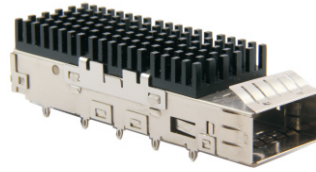
QSFP CAGE PRESS FIT



QSFP SOCKET



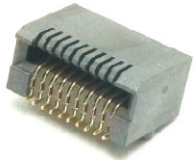
QSFP CAGE W/HEAT SINK PRESS FIT



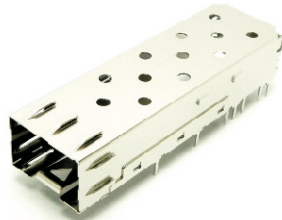
QSFP CAGE 1*2 PRESS FIT



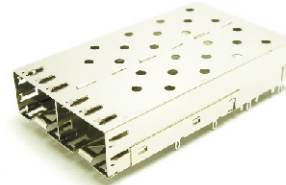
SFP CONNECTOR



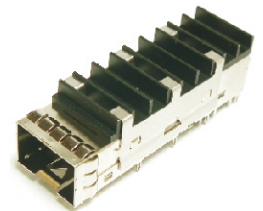
SFP CAGE T/H



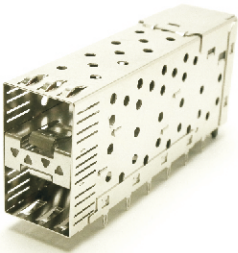
1*2 SFP CAGE PRESS FIT



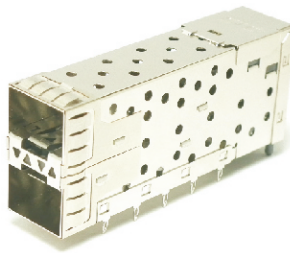
SFP+ PRESS FIT HEAT SINK



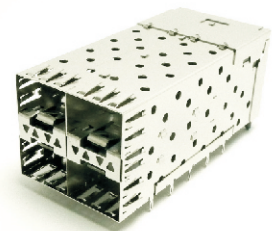
2*1 SFP W/LIGHT PIPE



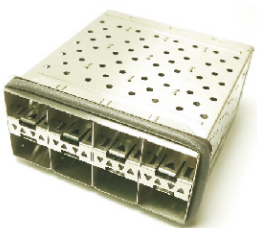
2*1 SFP+ W/LIGHT PIPE



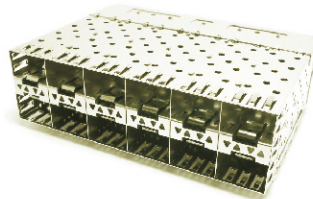
2*2 SFP W/LIGHT PIPE



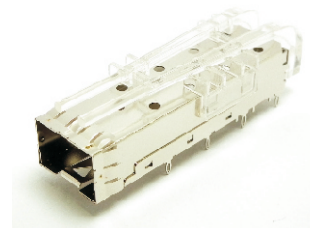
2*4 SFP+ W/LIGHT PIPE ELASTOMERIC GASKET



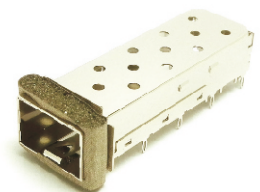
2*6 SFP+ W/LIGHT PIPE



SFP+ W/LIGHT PIPE



SFP+ CAGE W/GASKET

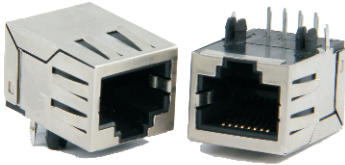


ALL LINK CORP. / ALL LINK ELECTRONICS CORP.

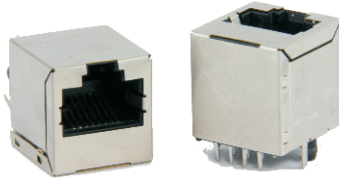
4F-11, NO.39, SEC.3,ZHONGSHAN RD., ZHONGHE DIST., NEW TAIPEI CITY 235, TAIWAN
TEL#:886-2-82286830 FAX#:886-2-82286832 <http://www.alllink.com.tw>

RJ + TRANSFORMER CONNECTOR

series no.: 199A
1 PORT R/A NON-LED
W/ SPRING



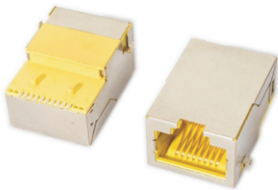
series no.: 199C
1 PORT TOP ENTRY
NON-LED



series no.: 199B
1 PORT R/A W/LED



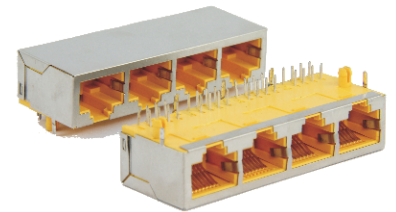
series no.: 199Q
TAB UP SINKING SMT



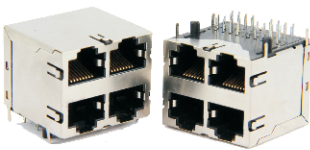
series no.: 199A
2 PORTS R/A WITH LED



series no.: 199A
1*4 PORTS NON-LED



series no: .199A
2*2 PORTS R/A NON-LED



series no: .199N
1G 2*1 PORTS



series no: .199R
1G 2*4 PORTS



series no: .201E
2 USB + RJ TRANSFORMER



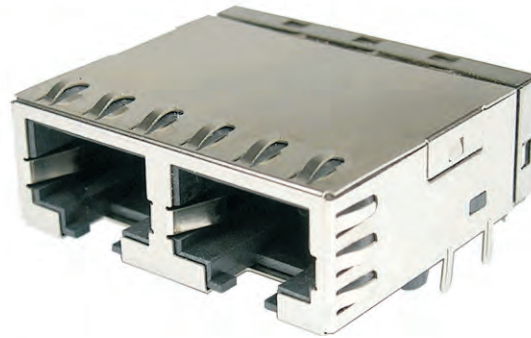
ALL LINK CORP. /ALL LINK ELECTRONICS CORP.

4F-11, NO.39, SEC.3,ZHONGSHAN RD., ZHONGHE DIST., NEW TAIPEI CITY235, TAIWAN
TEL#:886-2-82286830 FAX#:886-2-82286832 <http://www.alllink.com.tw>

RJ 45 TRANSFORMER



10G Base-TX



RJ45 LAN PORT
10/100/1000 BASE-TX

10/100/1000 Base-TX



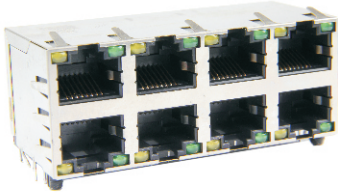
ALL LINK CORP. / ALL LINK ELECTRONICS CORP.

4F-11, NO.39, SEC.3, ZHONGSHAN RD., ZHONGHE DIST., NEW TAIPEI CITY 235, TAIWAN
TEL#:886-2-82286830 FAX#:886-2-82286832 <http://www.allink.com.tw>

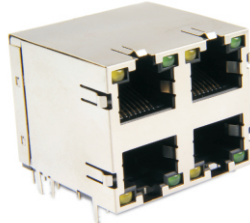
RJ45 CONNECTOR



series no.: 203H
W/LED 2*N PORTS SHIELD
W/EMI H:25.4



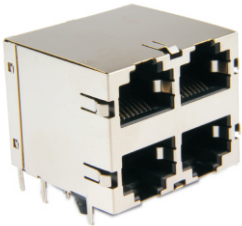
series no.: 203G
W/LED 2*N PORTS SHIELD
W/EMI H:27.2



series no.: 203F
W/LED 1*N PORTS SHIELD
W/EMI



series no.: 203D
2*N PORTS NON-LED
SHIELD W/EMI H:25.3



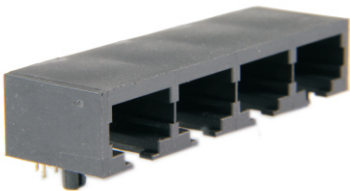
series no.: 203C
1*N PORTS NON-LED
SHIELD H:13.6



series no.: 203B
1*N PORTS NON-LED
SHIELD H:12.2



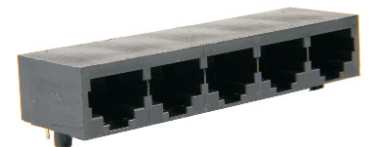
series no: .203B
1*N PORTS NON-SHIELD
H:11.5



series no: .203A
1*N PORTS SHIELD
W/EMI H:13.4



series no: .203A
1*N PORTS
NON-SHIELD H:12.7



ALL LINK CORP. /ALL LINK ELECTRONICS CORP.

4F-11, NO.39, SEC.3,ZHONGSHAN RD., ZHONGHE DIST., NEW TAIPEI CITY235, TAIWAN
TEL#:886-2-82286830 FAX#:886-2-82286832 <http://www.alllink.com.tw>



USB3.1 C TYPE

210F
C TYPE TOP MOUNT
TH & SMT HYBRID



210G
C TYPE TOP MOUNT
DUAL ROW SMT



210H
MID MOUNT (SINK)
TH/SMT HYBRID



210J
MID MOUNT(SINK)
DUAL ROW SMT



LICENSED PRODUCT

5405-X08
A/F DIP R/A UPRIGHT
TYPE



5405-X06
A/F DIP VERTICAL
TYPE



5405-X07
A/F DIP R/A
SINK TYPE



5405-X09
A/F DIP R/A REVERSE



5405-X01
A/F DIP R/A
With TID type



5405-X11
A/F DIP R/A
STANDARD TYPE



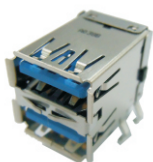
5406-X11
A/F DUAL R/A
SHORT BODY



5406-X01
A/F DUAL R/A
LONG BODY



5406-X01
A/F DUAL R/A
W/SPRING



5406-X04
USB 2.0 OVER 3.0
DIP R/A



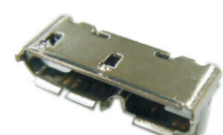
5407-X01
A/F R/A 4 LAYERS



5415-X01
B/F DIP R/A



5426-0B1-042
MICRO USB 3.0
B TYPE SMT





LICENSED products

5418-X01-E12
A/F SOLDER TYPE
11PINS



5418-X01-A16
A/F SOLDER TYPE



5418-X13-A22
A/MALE SOLDER
TYPE



5418-X13-B22
A/MALE SOLDER
TYPE



5418-X11-D11
A/MALE SOLDER
TYPE



5418-X11-B12
A/MALE SOLDER
TYPE



5420-X13-B12
B/MALE SOLDER
TYPE



5420-X14-A12
B/MALE SOLDER
TYPE



5422-X13-A13
MICRO USB 3.0
MALE SOLDER TYPE



5422-X13-C12
MICRO USB 3.0
MALE SOLDER TYPE



5422-X14-C12
MICRO USB 3.0
MALE SOLDER W/CLIP



ALL LINK CORP. /ALL LINK ELECTRONICS CO.

4F-11, NO.39, SEC.3,ZHONGSHAN RD., ZHONGHE DIST., NEW TAIPEI CITY 235, TAIWAN
TEL#:886-2-82286830 FAX#:886-2-82286832 <http://www.alllink.com.tw>

CONNECTOR



FPC / FFC CONNECTOR



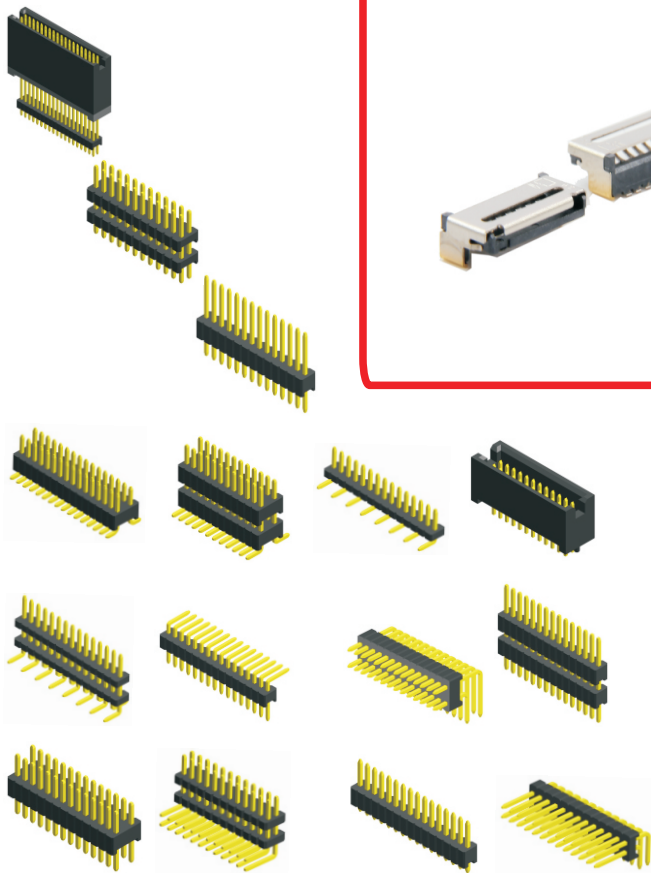
SATA / ESATA CONNECTOR



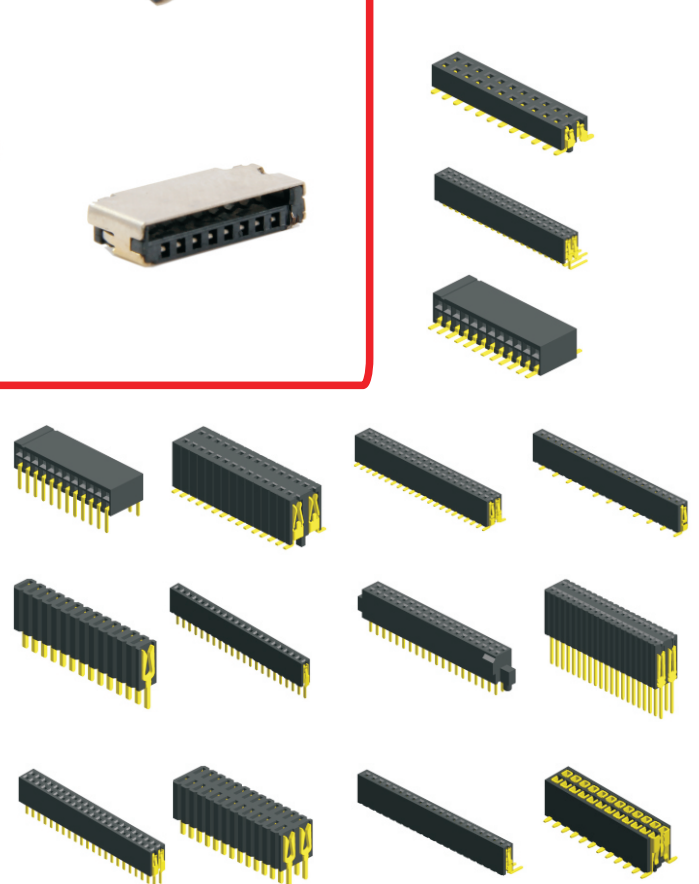
MICRO SD / MICRO SIM CONNECTOR



PIN HEADER BOX HEADER



FEMALE HEADER FEMALE SOCKET



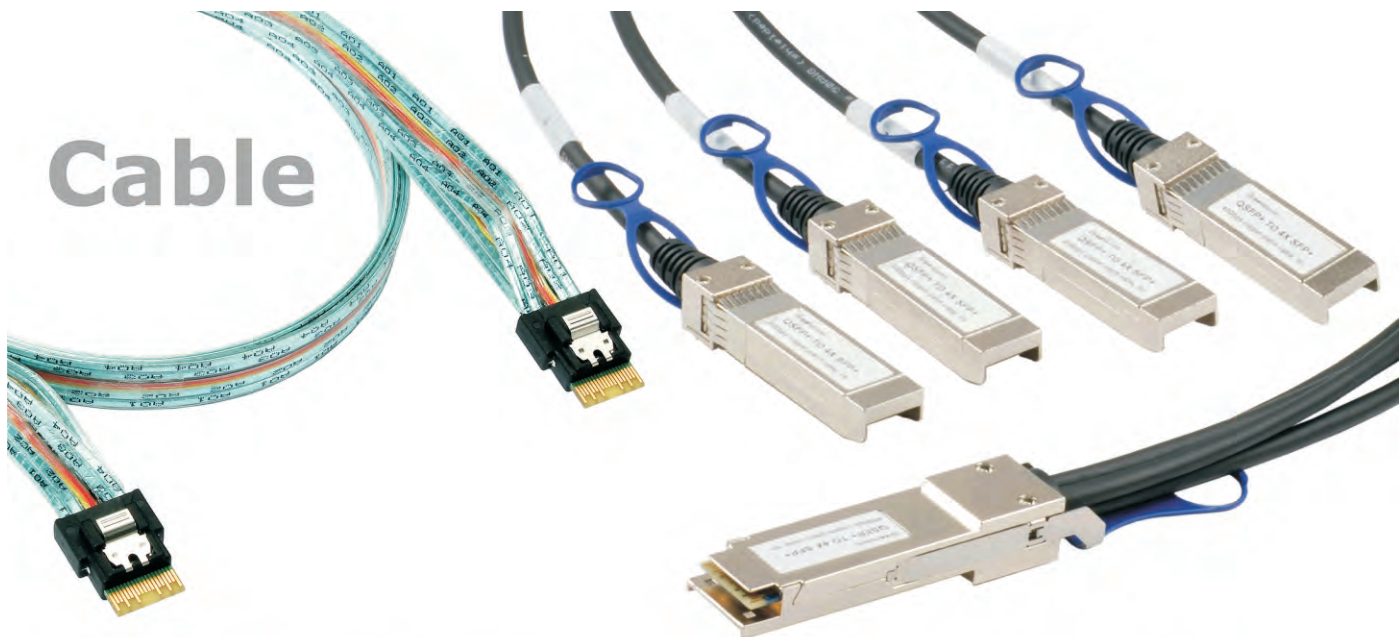
ALL LINK CORP. / ALL LINK ELECTRONICS CORP.

4F-11, NO.39, SEC.3, ZHONGSHAN RD., ZHONGHE DIST, NEW TAIPEI CITY 235, TAIWAN
TEL#: 886-2-82286830 FAX#: 886-2-82286832 <http://www.alllink.com.tw>

HIGH SPEED CONN. & CABLE



Cable



HIGH
SPEED

CONNECTION

Connector



ALL LINK CORP. / ALL LINK ELECTRONICS CORP.

4F-11, NO.39, SEC.3,ZHONGSHAN RD., ZHONGHE DIST., NEW TAIPEI CITY 235, TAIWAN
TEL#:886-2-82286830 FAX#:886-2-82286832 <http://www.alllink.com.tw>